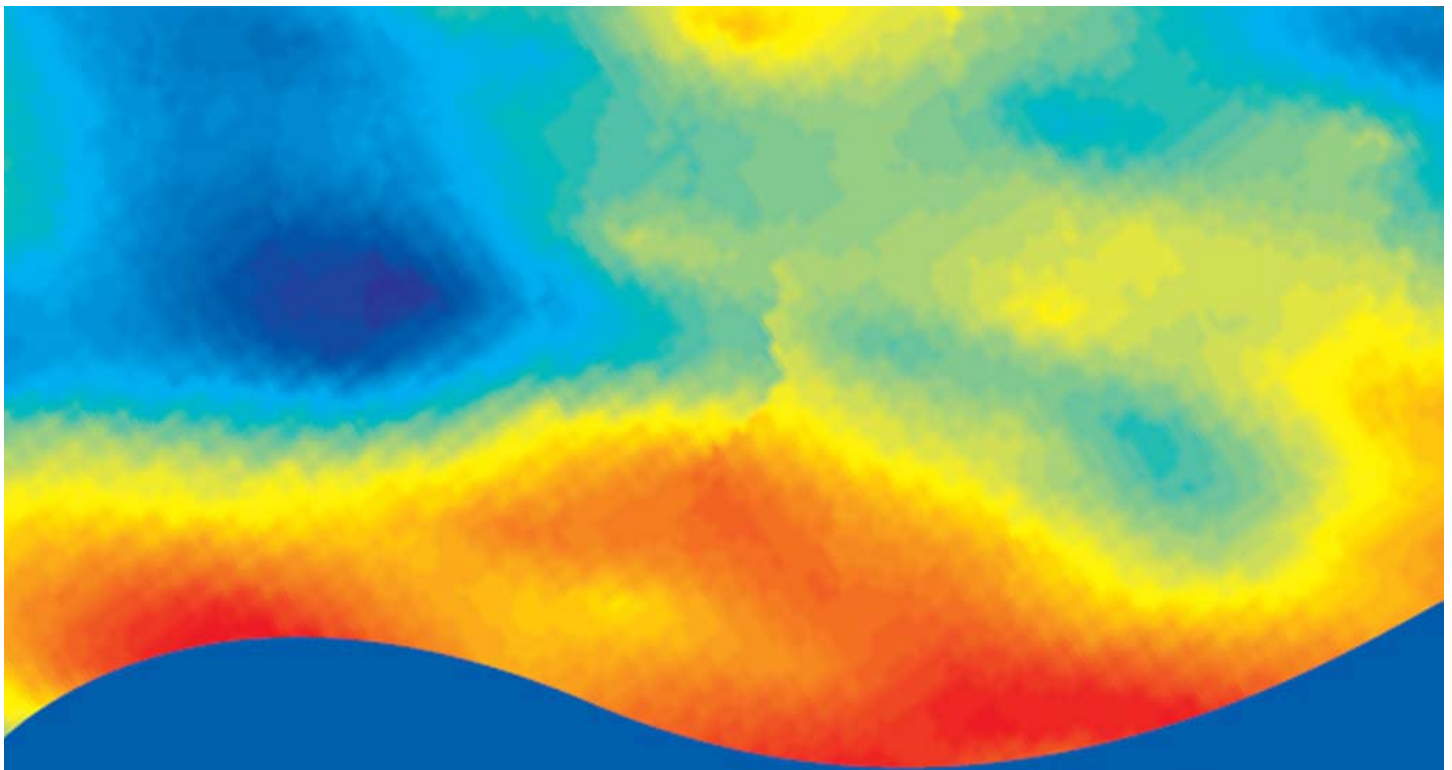


Short Course on GIS

Applications in Land Resource Management

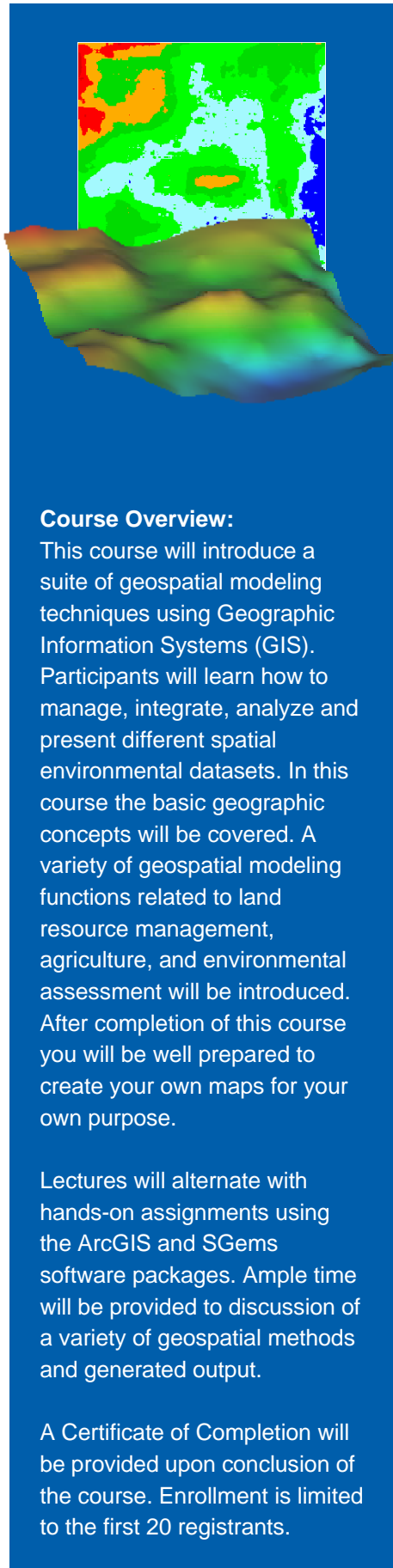


Jointly offered by:



July 31 to August 4, 2006

ICRISAT, Hyderabad



Course Overview:

This course will introduce a suite of geospatial modeling techniques using Geographic Information Systems (GIS). Participants will learn how to manage, integrate, analyze and present different spatial environmental datasets. In this course the basic geographic concepts will be covered. A variety of geospatial modeling functions related to land resource management, agriculture, and environmental assessment will be introduced. After completion of this course you will be well prepared to create your own maps for your own purpose.

Lectures will alternate with hands-on assignments using the ArcGIS and SGems software packages. Ample time will be provided to discussion of a variety of geospatial methods and generated output.

A Certificate of Completion will be provided upon conclusion of the course. Enrollment is limited to the first 20 registrants.

Short Course on GIS

Applications in Land Resource Management

*July 31 to August 4, 2006
in Hyderabad, ICRISAT*

Course Topics

- (1) What is a Geographic Information System?
- (2) Introduction to ArcGIS (import/export/navigation)
- (3) Spatial data formats
- (4) Basic GIS functions (query/overlay/union/extraction ...)
- (5) Map presentation and layout
- (6) Integration of spatial environmental datasets
- (7) Map projections
- (8) Spatial data analyses (vector and raster-based functions)
- (9) Geostatistics for environmental assessment
- (10) Implementation of a GIS project

Instructor

Dr. Sabine Grunwald is Assistant Professor and Distance Education Coordinator in the Soil and Water Science Department at the University of Florida, Institute of Food and Agricultural Sciences, USA. She has affiliate faculty appointments in the School of Natural Resources and Environment and the Department of Agricultural and Biological Engineering, University of Florida. Her research interests include quantitative soil landscape analyses, Geographic Information Systems, remote sensing, geostatistics, and land resource management. Since 2004 she is the Vice Chair of Commission 1.5 Pedometrics of the International Union of Soil Sciences. She is the editor of the textbook "Environmental Soil-Landscape Modeling – Geographic Information Technologies and Pedometrics" (2005) (CRC Press) and authored 53 publications. Dr. Grunwald teaches numerous graduate and undergraduate courses in GIS and Land Resource Management, Soil Landscape Modeling, and GIS in Soil and Water Science; some of them in distance education mode. She is an expert in GIS and geospatial modeling with more than 15 years of experience. Dr. Grunwald earned her Ph.D. (1996) and M.S. (1992) in Environmental Science from the Justus von Liebig University in Giessen, Germany. For more information about Dr. Grunwald, visit her home page at: <http://grunwald.ifas.ufl.edu>.

Who Should Attend?

- Students
- Conservation Managers
- Agricultural Engineers and Scientists; Agronomists
- Environmental Consultants, Regulators, and Scientists
- Extension Agents
- Soil Scientists
- Others seeking training in GIS and geospatial science

Five Ways to Benefit

- (1) Learn the basic functions of a GIS
- (2) Gain understanding of basic GIS terminology and geographic concepts
- (3) Receive specialized, hands-on training in GIS
- (4) Learn when and how to use geospatial methods
- (5) Learn about spatially-explicit modeling

Registration

Enrollment in this course is limited to the first 20 participants, and registrations will be accepted on a first-come, first-served basis. Advance registration is required and we encourage to register early to secure a seat in this course. After the cancellation deadline, registration fees will not be refunded.

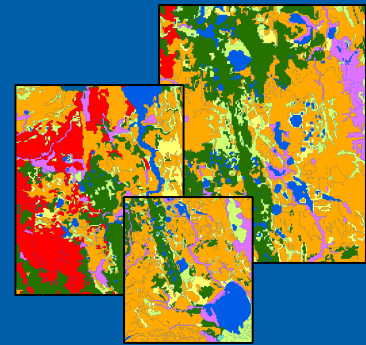
Registration fees Rs. \$15000

What does the fee include?

The registration fee includes on copy of a CD-ROM with lecture notes, Power Point slides and sample datasets. The fee also includes the use of computers in the training room. Meals and refreshments during sessions are provided. Participants are responsible for making their own hotel/guest room reservations.

To register contact the course organizer:

Dr. Venkataraman Balaji
Email: v.balaji@cgiar.org
Phone: +91 40 3071 3205



Course Agenda

Monday July 31, '06: 10:00–5:00 p.m.

Tuesday – Thursday

Aug. 1-3, '06: 9:00 – 5:00 p.m.

Friday Aug. 4, '06: 9:00 – 3:00 p.m.

Training Location:

This course will be held at the ICRISAT campus, Hyderabad.

Course Organizer:

Dr. Venkataraman Balaji
ICRISAT Campus
Patencheru, Hyderabad
Andra Pradesh, India.
Email: v.balaji@cgiar.org
Phone: +91 40 3071 3205

Course Instructor:

Dr. Sabine Grunwald
Soil and Water Science Department
University of Florida, IFAS
2169 McCarty Hall
PO Box 110290
Gainesville, FL 32611-0290, USA.
Email: SGrunwald@ifas.ufl.edu
Phone: 352-392-1951 ext. 204